

TECHNICAL INFORMATION

Concrete poles offer a choice of traditional or modern styling with durability. Utilizing the Vibraspun™ process (centrifugal casting, with even distribution of aggregates by a vibration

cycle in the spinning process) concrete poles can be used in practically every application from streetlighting, to sports-lighting, to power distribution...

SPECIFICATIONS

Poles shall be produced according to CSA A.14.M.2000 and ASTM C1089-88 standards. Poles are designed to meet CSA, AASHTO, and ANSI Standards.

CEMENT

Cement conforms to CSA Type 30 high early strength and A.S.T.M. C-150 standards. Concrete will have a 28 day compressive strength of 55 Mpa.

STEEL/REINFORCING

Passive reinforcing shall consist of high tensile steel. Galvanized or epoxy coated rebar is available upon request. All poles are partially prestressed and conform to CSA G279 and ASTM A416.

ACCESSORIES

All inserts, fasteners, crossarms, pole steps, fin caps, base plates, handhole boxes and covers will be either a die cast zinc alloy, stainless steel or hot dipped galvanized. All possess excellent corrosion resistance to normal atmospheric conditions.

POLE TOPS

All pole tops will be equipped with a weatherproof cap, with the exception of poles with a tenon top or optional fin cap.

DIRECT EMBEDMENT

Simple and cost effective, poles are generally direct buried. This has been the standard and best selling feature of our poles. Unlike wood, which contaminates the soil with chemical treatments, or aluminum which typically requires the need for a costly base. Experience has shown that after installation a concrete pole is maintenance free.

WIRING

The hollow raceways of concrete poles allows for ease of wiring. Wiring is always hidden from the elements, and provides a pleasing clean appearance.



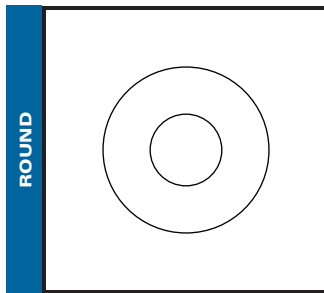
UTILITY STRUCTURES INC.

TECHNICAL INFORMATION

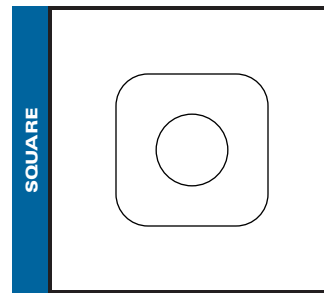
QUALITY CONTROL

Through our fifty plus years in the precast industry we have developed a reputation for high quality concrete products. As a C.S.A A23.4-05 accredited factory, we must maintain a quality control program. This compliance control program defines a level of quality that the client can expect and that this company is working to provide. Our program commits us to producing the highest quality precast products available. The implementation of this program assures the product is inspected through shop drawings, production practises and record keeping. A copy of our quality compliance manual is available upon request.

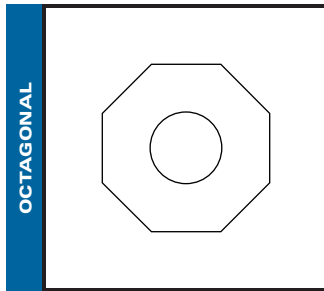
CROSS SECTIONAL STYLES



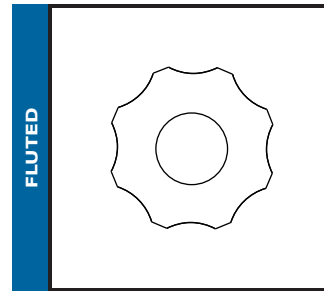
- Hampton
- Rockcliffe
- Newport



- Oxford
- Thompson



- Madison
- Cambridge
- Stratford
- Westmount
- Parkdale



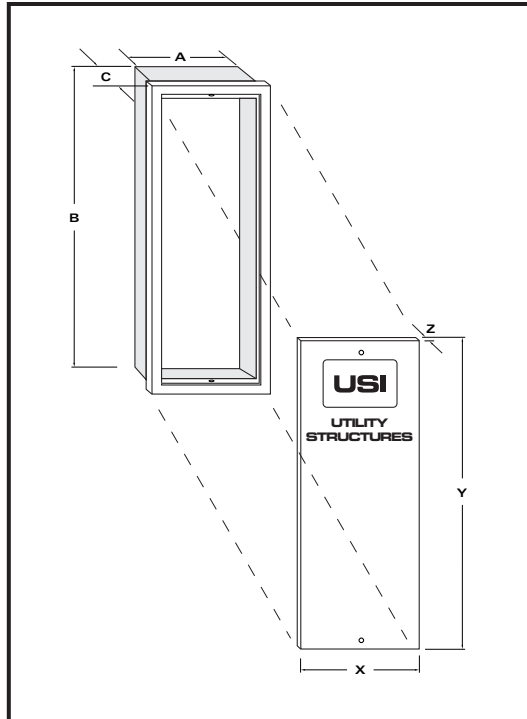
- Grandview
- Washington



TECHNICAL INFORMATION

STANDARD HANDHOLE BOXES AND COVER PLATES

Handhole boxes are typically 36" above grade. Our Handhole boxes and covers are comprised of a die cast (ZA 12) zinc alloy. The cover is form fitting to the box which allows for ease of access. They are available in the following three sizes:

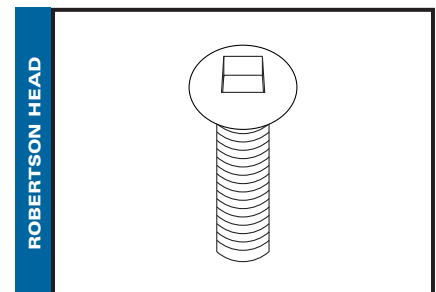
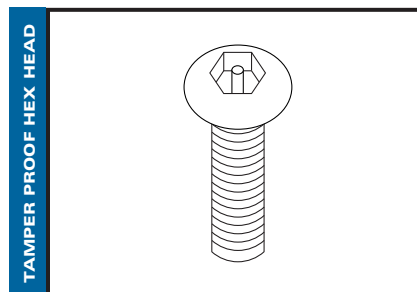
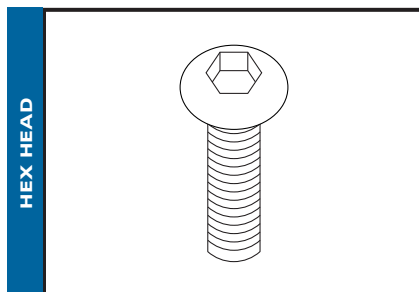


BOX NUMBER	DIMENSIONS		
	A	B	C
1	2"	8"	1 3/4"
2	2 1/2"	8"	2"
3	3 1/2"	10 1/2"	2 1/2"

COVER NUMBER	DIMENSIONS		
	X	Y	Z
1	2 1/4"	9"	1/4"
2	2 3/4"	9"	1/4"
3	3 3/4"	11 1/2"	1/4"

STAINLESS STEEL SCREWS

Handhole covers are fastened with stainless steel (18-8) button head cap screws. They are available in the following head styles; Hex head, Tamper proof hex head, and Robertson head. Dimensions are standard for all three styles - 1/4"-20 x 3/4" long.



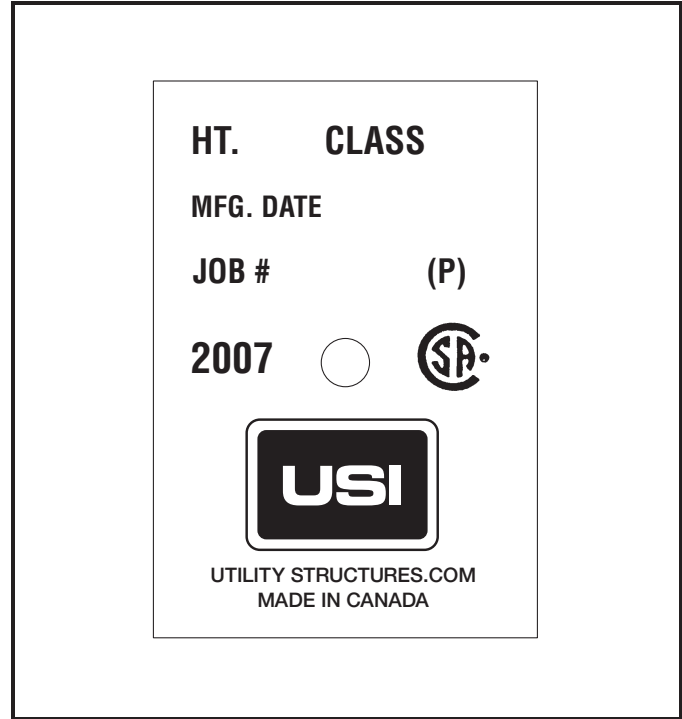
UTILITY STRUCTURES INC.

TECHNICAL INFORMATION

IDENTIFICATION PLATE

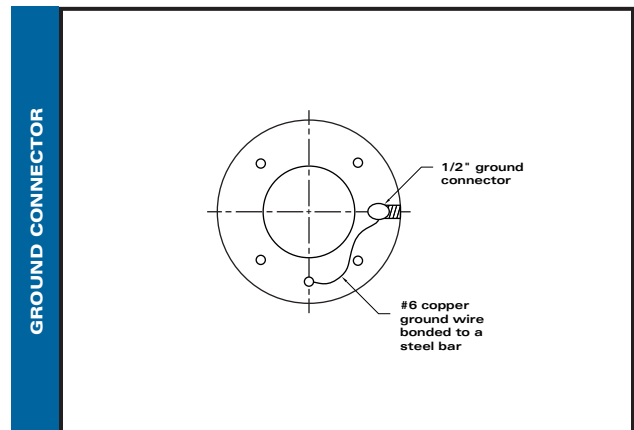
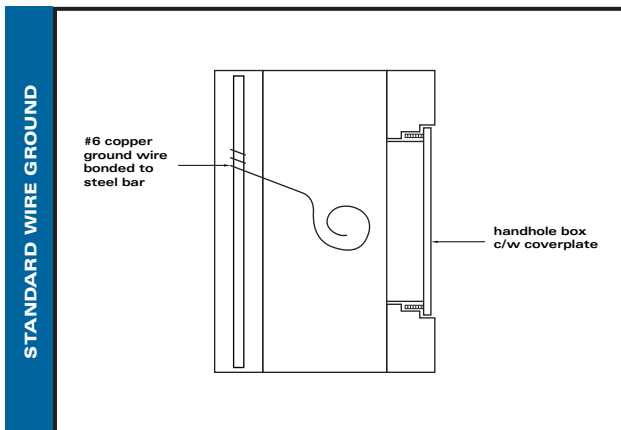
Concrete poles are manufactured to CSA Standard A.14.M-2000. All poles come equipped with this nameplate, which outlines nine important features of each pole.

- **Ht. (Height)** - the overall height.
- **Class** - the strength.
- **Mfg. Date:** - Manufactured Date
- **Job #** - U.S.I. classifies each job with a number.
- **Year** - the year of manufacture
- **(P)** - To signify the pole is prestressed
- **C.S.A.** - the CSA logo to classify all poles are manufactured to CSA requirements
- **U.S.I.** - the USI logo.
- **Made in Canada.**



ELECTRICAL GROUNDING

CSA requires a ground connection providing adequate electrical contact to one steel rod. The ground bar is continuous throughout the length of the pole. Grounding will consist of a #6 bare copper strand. The following two grounding methods are approved by CSA.

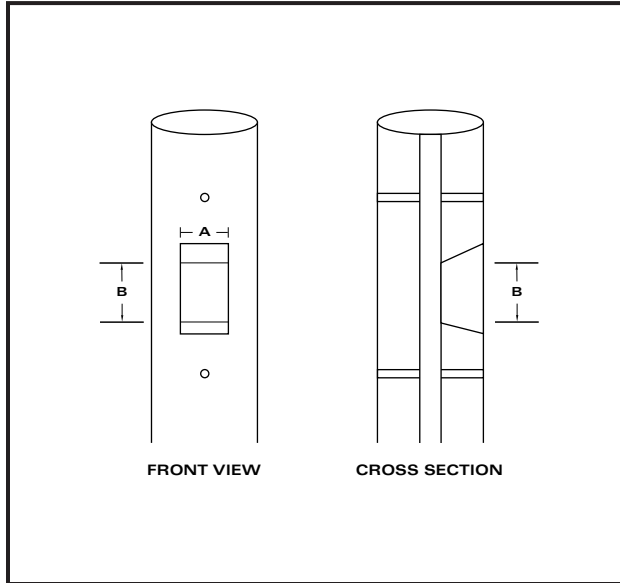


61 BONGARD AVENUE, NEPEAN, ONTARIO CANADA K2E 6V2 • TEL: [613] 225-6398 • FAX: [613] 225-1681 • TOLL FREE: 1-800-267-6466
www.utilitystructures.com

TECHNICAL INFORMATION

STANDARD APERTURES - POLE TOP

Size is standard, but location will vary with fixture mount style.

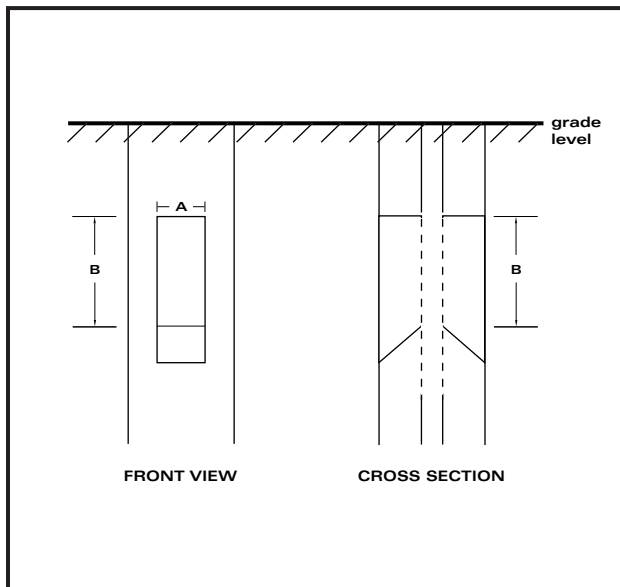


WIRING APERTURE	A	B
1 1/2" X 3"	1 1/2"	3"

(inside clear dimensions)

STANDARD APERTURES - UNDERGROUND

Standard location is 18" below grade level and is available in two sizes.



WIRING APERTURE	A	B
3 1/2" X 10 1/2"	3 1/2"	10 1/2"
2 1/2" X 5"	2 1/2"	5"

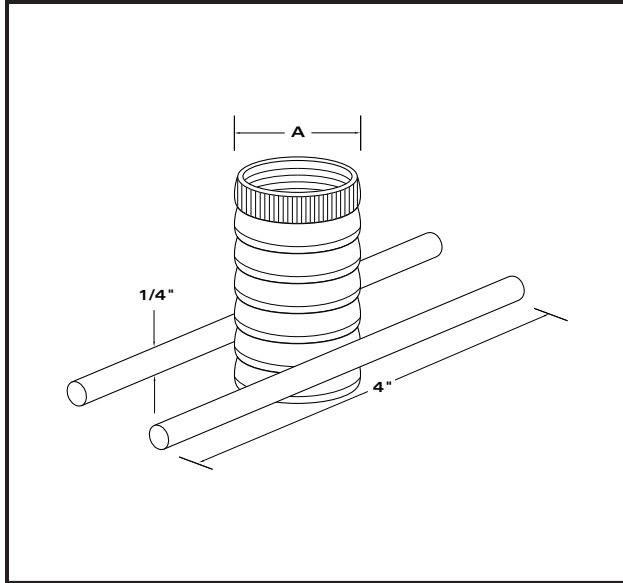
(inside clear dimensions)



UTILITY STRUCTURES INC.

TECHNICAL INFORMATION

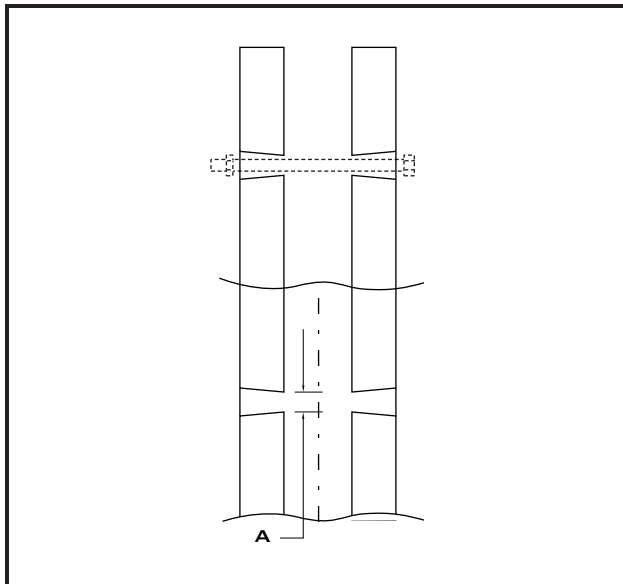
CAST IN CONCRETE INSERTS



INSERT DIAMETER	A
Zinc Alloy	1/4"
Or	3/8"
Hot Dip Galvanized	1/2"
	5/8"
	3/4"

Note: Inserts are designed to accept standard UNC bolts.

THROUGH HOLES



BOLT HOLE DIAMETER	A
Standard Sizes	1/2"
	5/8"
	3/4"
	1"

(inside clear dimensions through holes are tapered 1/16"/in.)



61 BONGARD AVENUE, NEPEAN, ONTARIO CANADA K2E 6V2 • TEL: [613] 225-6398 • FAX: [613] 225-1681 • TOLL FREE: 1-800-267-6466
www.utilitystructures.com