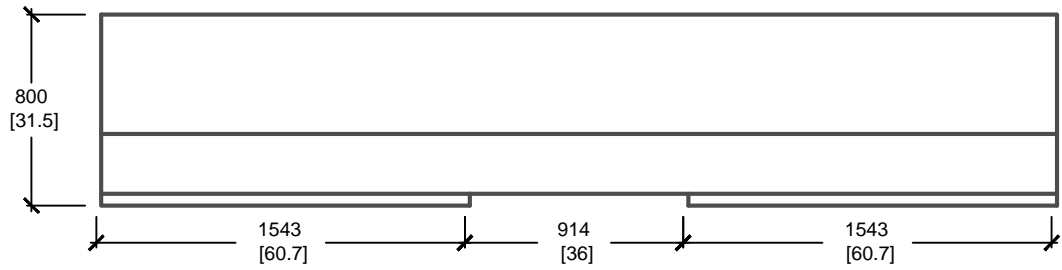
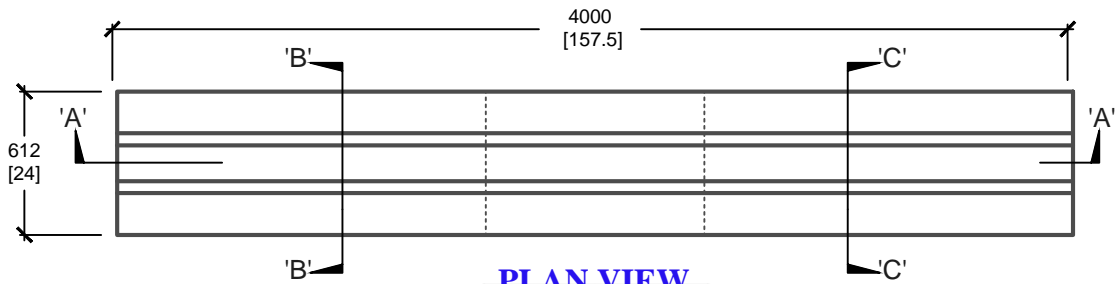


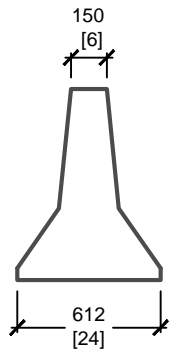
* AVAILABLE IN ANY LENGTH (MAXIMUM 4.0m) *



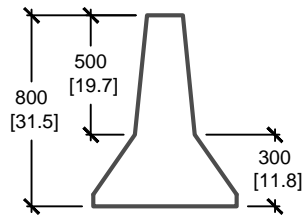
CROSS SECTION 'A'



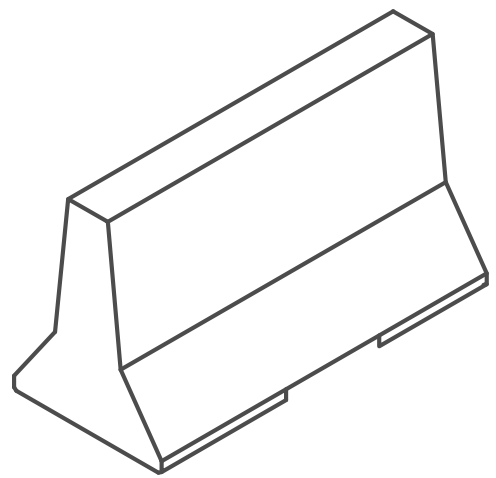
PLAN VIEW



CROSS SECTION 'B'



CROSS SECTION 'C'



ISOMETRIC

mm [Inches]
ALL DIMENSIONS DEFAULT TO MILLIMETRES



UTILITY STRUCTURES INC.
61 BONGARD AVE | OTTAWA, ON | K2E 6V2
T: 613.225.6398 F: 613.225.1681 TF: 800.267.6466
www.utilitystructures.com

- CONSTRUCTION DETAILS:**
- AVAILABLE IN VARIOUS LENGTHS, COLOURS, AND FINISHES
 - HOOK AND EYE CONNECTION AVAILABLE
- CSA 23.4-05
- 35 MPa (5000psi) AT 28 DAYS
 - STRIPPING STRENGTH: MIN. 20 MPa(2900psi)
 - 5-8% AIR ENTRAINED
 - EXPOSURE CLASS: C-1
 - REINFORCING: STEEL TO CSA CAN A23.1

| | | |
|----------------|--------------------------------------|----------|
| PRODUCT CODE: | E-41-NC | |
| | SECURITY BARRIER WITH NO CONNECTIONS | |
| DIMENSIONS: | 0.8m(H) x 4000mm(L) | |
| TOTAL WEIGHT: | 2,268 kg / 5,000 lbs | |
| REVISION DATE: | JANUARY 4, 2018 | REV. # 6 |