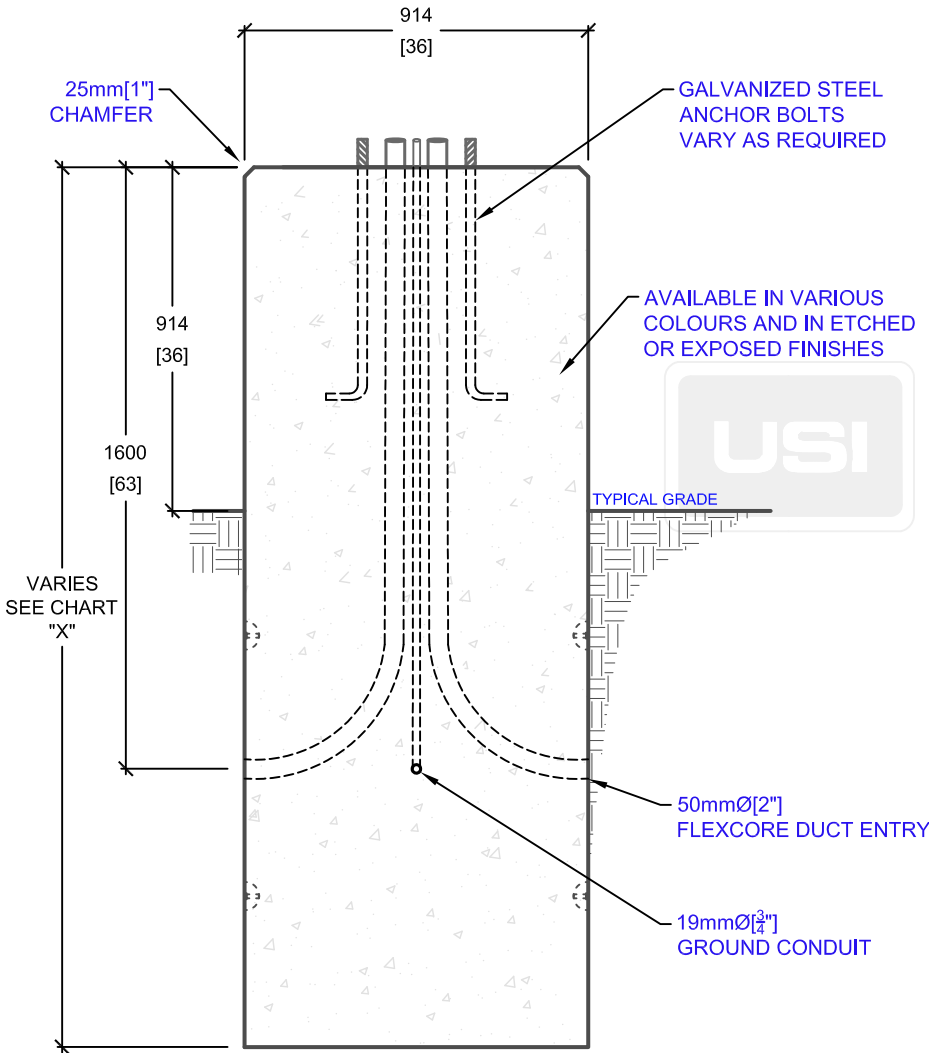


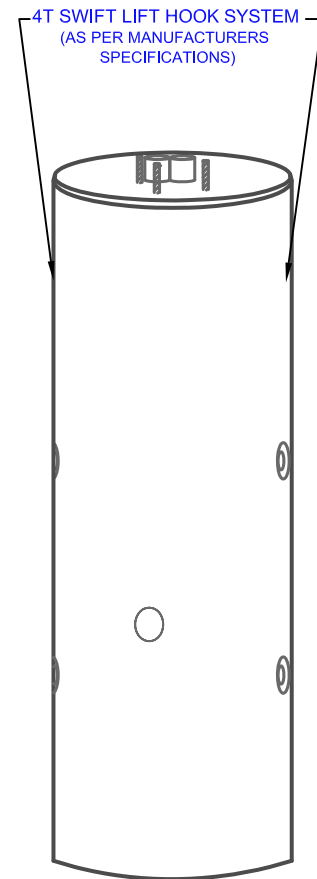
**PLAN VIEW**

PRODUCT CODE	POLE HEIGHT (ft.)	BASE BURIAL DEPTH (ft.)	OVERALL LENGTH "X" (ft.)	WEIGHT (kg/lbs.)
P-50-36 (8)	10-17	5'	8'	3,840kg / 8450lbs
P-50-36 (9)	18-24	6'	9'	4,320kg / 9,505lbs
P-50-36 (10)	25-38	7'	10'	4,800kg / 10,560lbs
P-50-36 (11)	39-54	8'	11'	5,280kg / 11,615lbs
P-50-36 (12)	55-65	9'	12'	5,760kg / 12,670lbs

\* BASE BURIAL DEPTH SUBJECT TO SOIL CONDITIONS, REFER TO SOIL REPORT



**SIDE ELEVATION**



**ISOMETRIC VIEW**

mm  
[Inches]  
ALL DIMENSIONS DEFAULT TO MILLIMETRES



**UTILITY STRUCTURES INC.**

61 BONGARD AVE | OTTAWA, ON | K2E 6V2  
T: 613.225.6398 F: 613.225.1681 TF: 800.267.6466

[www.utilitystructures.com](http://www.utilitystructures.com)

**CONSTRUCTION DETAILS:**

- ACCOMMODATES VARIOUS POLE HEIGHTS
- AVAILABLE IN VARIOUS COLOURS & FINISHES
- ADJUSTABLE BOLT CIRCLE DIAMETER
- BOLT CIRCLE DIAMETER: 150mm[6"] TO 610mm[24"]

- CSA 23.4-05
  - 45 MPa (6525psi) AT 28 DAYS
  - STRIPPING STRENGTH: MIN. 20 MPa(2900psi)
  - 5-8% AIR ENTRAINED
  - EXPOSURE CLASS: C-1
- REINFORCING: STEEL TO CSA CAN A23.1

**PRODUCT CODE:**

**P-50-36 (H)**

36" DIAMETER PARKING LOT POLE BASE

**DIMENSIONS:**

**VARIES (H) X 914mm dia.**

**TOTAL WEIGHT:**

**VARIES**

**REVISION DATE:**

**DECEMBER 14, 2018**

**REV. # 3**