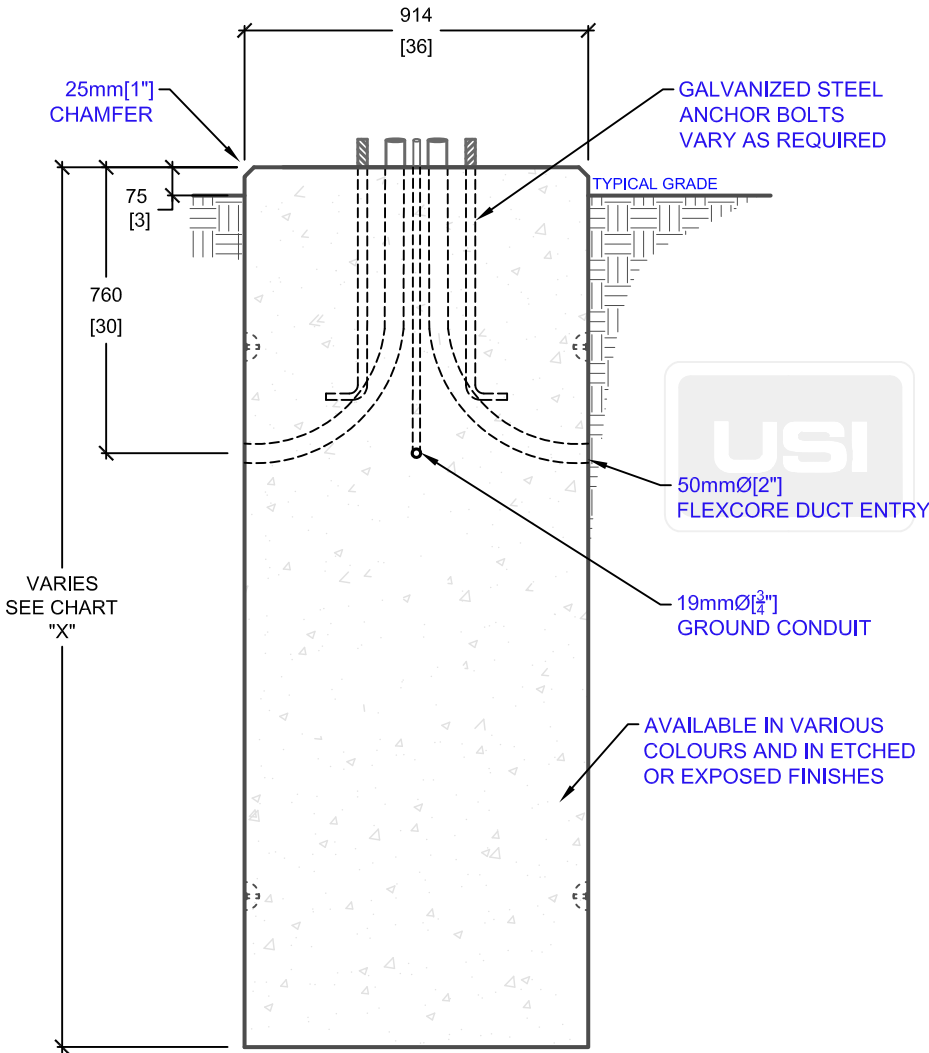


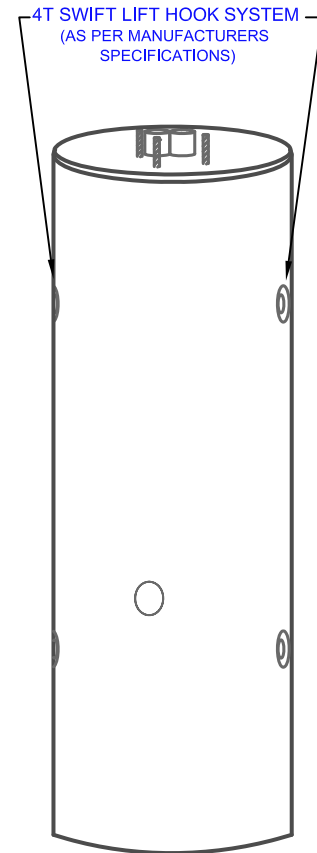
**PLAN VIEW**

PRODUCT CODE	POLE HEIGHT (ft.)	BASE BURIAL DEPTH (ft.)	OVERALL LENGTH "X" (ft.)	WEIGHT (kg/lbs.)
P-50-36G (5)	10-17	4' 9"	5'	2,400kg / 5,280lbs
P-50-36G (6)	18-25	5' 9"	6'	2,880kg / 6,335lbs
P-50-36G (7)	26-40	6' 9"	7'	3,360kg / 7,390lbs
P-50-36G (8)	41-52	7' 9"	8'	3,840kg / 8,450lbs
P-50-36G (9)	53-65	8' 9"	9'	4,320kg / 9,505lbs
P-50-36G (10)	66-75	9' 9"	10'	4,800kg / 10,560lbs
P-50-36G (11)	76-85	10' 9"	11'	5,280kg / 11,615lbs
P-50-36G (12)	86-92	11' 9"	12'	5,760kg / 12,670lbs

\* BASE BURIAL DEPTH SUBJECT TO SOIL CONDITIONS, REFER TO SOIL REPORT



**SIDE ELEVATION**



**ISOMETRIC VIEW**

mm  
[Inches]  
ALL DIMENSIONS DEFAULT TO MILLIMETRES



**UTILITY STRUCTURES INC.**

61 BONGARD AVE | OTTAWA, ON | K2E 6V2  
T: 613.225.6398 F: 613.225.1681 TF: 800.267.6466

[www.utilitystructures.com](http://www.utilitystructures.com)

**CONSTRUCTION DETAILS:**

- ACCOMMODATES VARIOUS POLE HEIGHTS
- AVAILABLE IN VARIOUS COLOURS & FINISHES
- ADJUSTABLE BOLT CIRCLE DIAMETER
- BOLT CIRCLE DIAMETER: 150mm[6"] TO 610mm[24"]

- CSA 23.4-05
  - 45 MPa (6525psi) AT 28 DAYS
  - STRIPPING STRENGTH: MIN. 20 MPa(2900psi)
  - 5-8% AIR ENTRAINED
  - EXPOSURE CLASS: C-1
- REINFORCING: STEEL TO CSA CAN A23.1

**PRODUCT CODE:**

**P-50-36G (H)**  
36" DIAMETER POLE BASE

**DIMENSIONS:**

**VARIES (H) X 914mm dia.**

**TOTAL WEIGHT:**

**VARIES**

**REVISION DATE:**

**DECEMBER 14, 2018**

**REV. # 3**