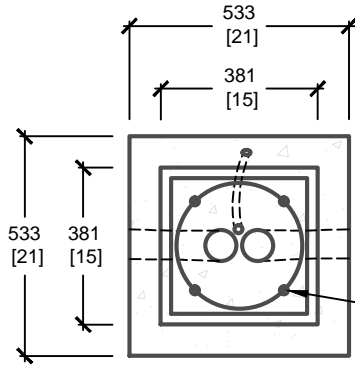


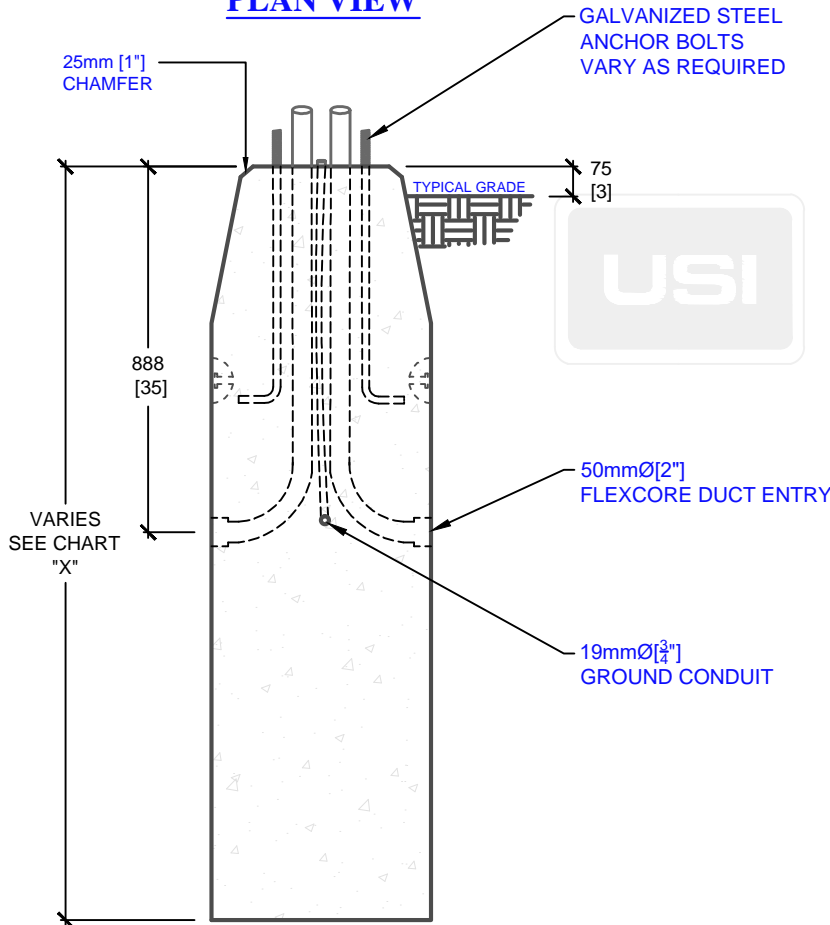
PRODUCT CODE	POLE HEIGHT (ft.)	BASE BURIAL DEPTH (ft.)	OVERALL LENGTH "X" (ft.)	WEIGHT (kg/lbs.)
P-53-21 (5)	10-17	4'9"	5	1,200kg / 2,650lbs
P-53-21 (6)	18-25	5'9"	6	1,420kg / 3,100lbs

* BASE BURIAL DEPTH SUBJECT TO SOIL CONDITIONS, REFER TO SOIL REPORT



BOLT CIRCLE DIAMETER AS REQUIRED

PLAN VIEW



GALVANIZED STEEL ANCHOR BOLTS VARY AS REQUIRED

25mm [1"] CHAMFER

TYPICAL GRADE

75 [3]

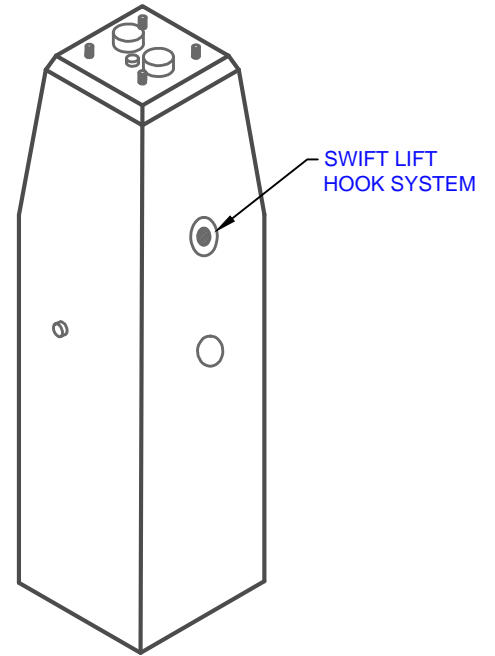
888 [35]

VARIES SEE CHART "X"

50mmØ[2"] FLEXCORE DUCT ENTRY

19mmØ[¾"] GROUND CONDUIT

SIDE ELEVATION



SWIFT LIFT HOOK SYSTEM

ISOMETRIC VIEW

mm [Inches]
ALL DIMENSIONS DEFAULT TO MILLIMETRES



UTILITY STRUCTURES INC.

61 BONGARD AVE | OTTAWA, ON | K2E 6V2
T: 613.225.6398 F: 613.225.1681 TF: 800.267.6466

www.utilitystructures.com

CONSTRUCTION DETAILS:

- ACCOMMODATES VARIOUS POLE HEIGHTS
- ADJUSTABLE BOLT CIRCLE DIAMETER
- BOLT CIRCLE DIAMETER: 150mm[6"] TO 305mm[12"]

- CSA 23.4-05
- 35 MPa (5000psi) AT 28 DAYS
- STRIPPING STRENGTH: MIN. 20 MPa(2900psi)
- 5-8% AIR ENTRAINED
- EXPOSURE CLASS: C-1
- REINFORCING: STEEL TO CSA CAN A23.1

PRODUCT CODE:

P-53-21(H)

21" SQUARE TAPERED POLE BASE

DIMENSIONS:

VARIES(H) X 533mm X 533mm

TOTAL WEIGHT:

VARIES

REVISION DATE:

JULY 31, 2018

REV. # 2