



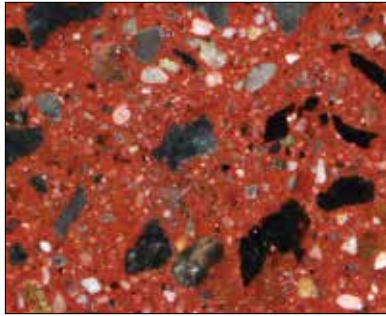
# COLOURS & FINISHES

FOR CONCRETE POLES



UTILITY STRUCTURES INC.

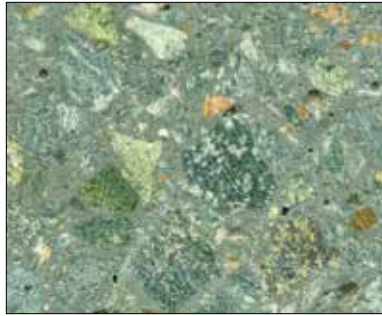
# COLOURS - POLISHED FINISHES 2



**Autumn Red**

SELECT CODES

2 - AR



**Aztec Jade**

SELECT CODES

2 - AJ



**Black Eclipse**

SELECT CODES

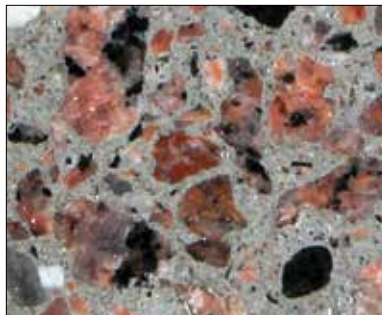
2 - BE



**Dark Bronze**

SELECT CODES

2 - DB



**Desert Rose**

SELECT CODES

2 - DR



**Desert Sand**

SELECT CODES

2 - DS



**Midnight Lace**

SELECT CODES

2 - ML



**Natural Grey**

SELECT CODES

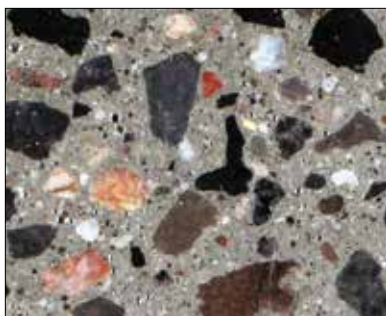
2 - NG



**Oriental Jade**

SELECT CODES

2 - OJ



**Salt & Pepper**

SELECT CODES

2 - SP



**Seluki Bronze**

SELECT CODES

2 - SB

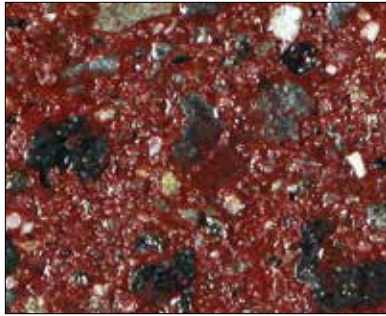


**Venetian White**

SELECT CODES

2 - VW

# COLOURS - ETCHED FINISHES 3



**Autumn Red**

SELECT CODES

3 - AR



**Aztec Jade**

SELECT CODES

3 - AJ



**Black Eclipse**

SELECT CODES

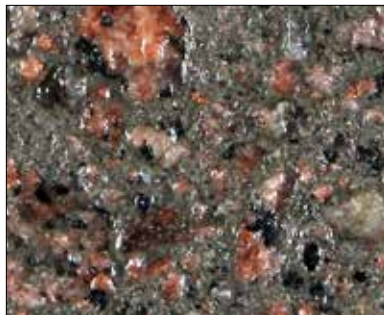
3 - BE



**Dark Bronze**

SELECT CODES

3 - DB



**Desert Rose**

SELECT CODES

3 - DR



**Desert Sand**

SELECT CODES

3 - DS



**Midnight Lace**

SELECT CODES

3 - ML



**Natural Grey**

SELECT CODES

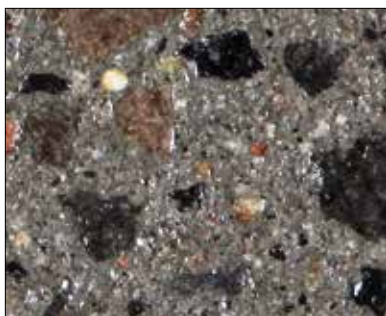
3 - NG



**Oriental Jade**

SELECT CODES

3 - OJ



**Salt & Pepper**

SELECT CODES

3 - SP



**Seluki Bronze**

SELECT CODES

3 - SB



**Venetian White**

SELECT CODES

3 - VW

# COLOURS - EXPOSED FINISHES 4



**Autumn Red**

SELECT CODES

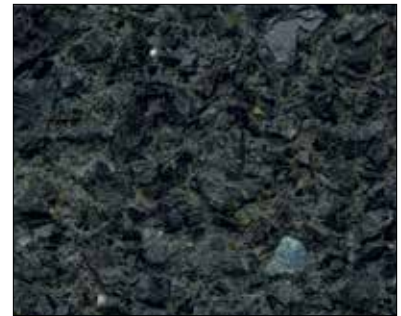
4 - AR



**Aztec Jade**

SELECT CODES

4 - AJ



**Black Eclipse**

SELECT CODES

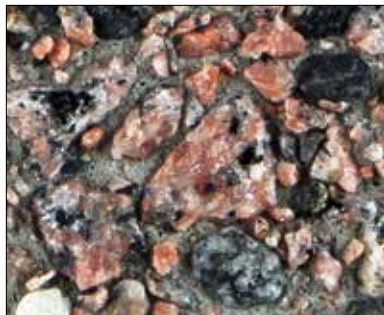
4 - BE



**Dark Bronze**

SELECT CODES

4 - DB



**Desert Rose**

SELECT CODES

4 - DR



**Desert Sand**

SELECT CODES

4 - DS



**Midnight Lace**

SELECT CODES

4 - ML



**Natural Grey**

SELECT CODES

4 - NG



**Oriental Jade**

SELECT CODES

4 - OJ



**Salt & Pepper**

SELECT CODES

4 - SP



**Seluki Bronze**

SELECT CODES

4 - SB



**Venetian White**

SELECT CODES

4 - VW

# FINISHES

There are four pole finishes to choose from, each offering a different texture to suit the application:

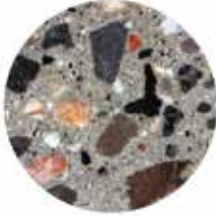
1



## TYPE 1 – PLAIN GREY (PG) MOLD FINISH

Plain Grey (PG) mold finish (1) is standard for all poles. This finish is typically used in combination with plain grey (PG), non-decorative concrete poles. Natural limestone aggregates and concrete sand combined with cement, to provide a plain grey (PG), out of the mold finish (1). This is typically used on our Hampton, Newport and Oxford series poles.

2



## TYPE 2 – POLISHED FINISH

This surface finish is accomplished by polishing the face of the concrete pole by mechanical means. Diamond polishing discs work the surface to an ultra smooth finish. After polishing the face of the pole, a minimum of two coats of clear sealer are applied to further enhance the natural beauty of the stone.

3



## TYPE 3 – ETCHED FINISH

This surface finish, as the name suggests is a semi-rough finish. The etching of the pole surface is accomplished by sand blasting the face of the pole. The sand blasting removes the outer layer of mortar, exposing the decorative aggregates beneath. As with the polished finish, a sealer is applied to enhance the look.

4



## TYPE 4 – EXPOSED FINISH

This surface finish is a two-stage process. Initially the pole form is coated with a “surface retarder”, which delays the hardening of the thin outer layer of the concrete. After the pole is cured, the pole surface is pressure washed with water to expose the aggregate. This finish is a rough finish, with large portions of the aggregate showing. No sealers are typically applied to this pole.

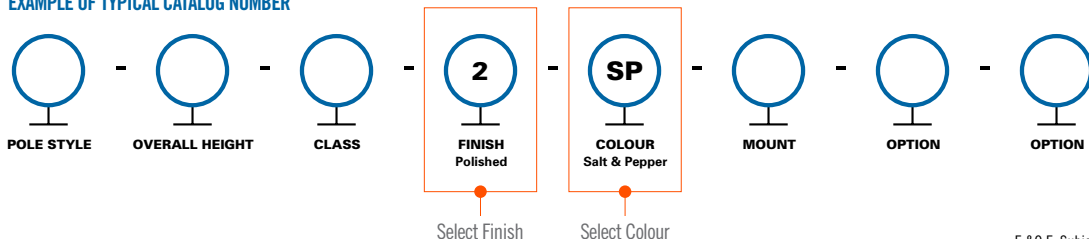


## ABOUT OUR COLOURS & FINISHES

The decorative pole finish is not a veneer or a painted finish. The entire concrete matrix is a combination of specialty decorative colored aggregates, pigments, and cement. The entire pole is spun cast with this concrete mix. The combination of various concrete mix designs and surface finishes provides the client with over 36 standard finishes (custom colours available upon request) to choose from.

## POSITION REFERENCE OF COLOUR AND FINISH CODE IN TYPICAL CATALOGUE NUMBER

EXAMPLE OF TYPICAL CATALOG NUMBER





CODE: 4 - AJ



CODE: 3 - VW



CODE: 2 - BE

# COLOURS & FINISHES

## FOR CONCRETE POLES



**UTILITY STRUCTURES INC.**

61 BONGARD AVENUE, OTTAWA, ONTARIO CANADA K2E 6V2  
TEL: [613] 225-6398 • FAX: [613] 225-1681 • TOLL FREE: 1-800-267-6466  
[www.utilitystructures.com](http://www.utilitystructures.com)

Actual product may vary from colours shown in photos. All information accurate at time of printing.  
Utility Structures Inc. is the owner and/or authorized user of all trademarks and logos. E.&O.E. Subject to change without notice. Printed in Canada. ©2014.